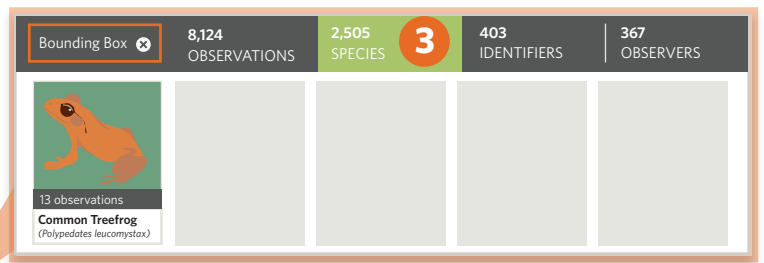


Learn how to use **iNaturalist.org** in three simple steps

1 Explore observations on iNaturalist from Malaysia



- 1 Visit iNaturalist.org and click on "Observations"
- 2 Use the "Location" field to search for "Malaysia"

You can also zoom/pan the map manually and click 'Redo Search in Map' to create your own bounding box

- 3 Click on the tabs to further explore the data

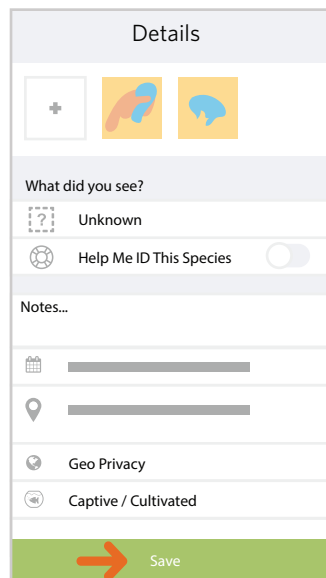
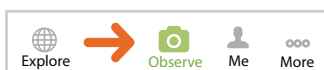
There are over 8,000 observations from Malaysia posted to iNaturalist representing over 2,500 species

2 Record your own observations using the iNaturalist mobile apps

Observations should document individual organisms.

Accompany each with one or more close-up, focused photos.

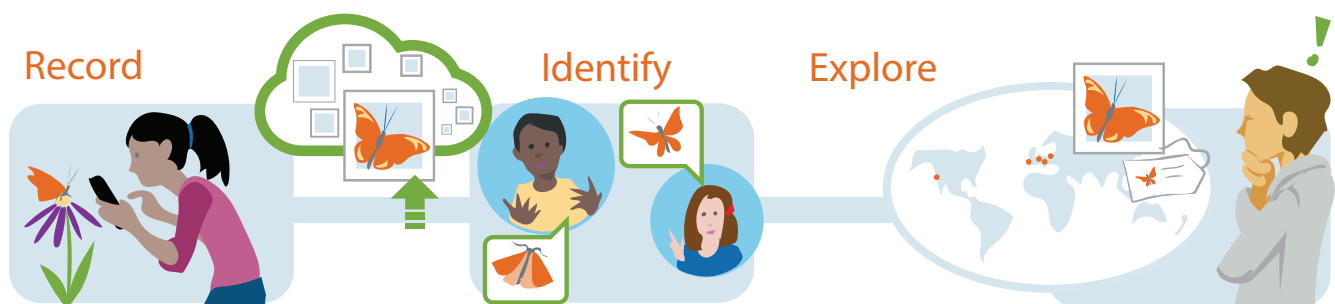
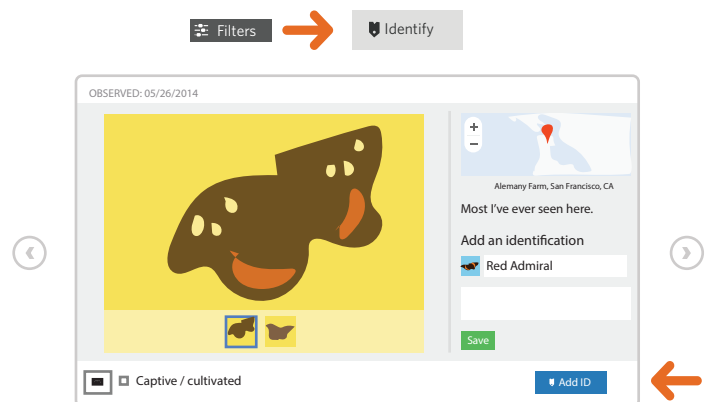
Observations can be made without internet. Once you have an internet connection, upload your observations



You can also add observations via the web from iNaturalist.org. Make an account, expand the menu in the upper right, and click 'Add'. Drag in photos to upload them as observations.

3 Identify observations by recruiting local naturalists to volunteer their expertise

Direct your experts to sign-up and then navigate to the "Identify" button in the "Filters" menu using the URL you configured above to start adding identifications



visit www.inaturalist.org/pages/getting+started for more information